

**NDUFB9 Antibody (Center)**  
**Purified Rabbit Polyclonal Antibody (Pab)**  
**Catalog # AP21707c****Specification**

---

**NDUFB9 Antibody (Center) - Product Information**

Application	WB,E
Primary Accession	<a href="#">Q9Y6M9</a>
Reactivity	Human, Mouse
Host	Rabbit
Clonality	polyclonal
Isotype	Rabbit IgG
Calculated MW	21831

**NDUFB9 Antibody (Center) - Additional Information****Gene ID** 4715**Other Names**

NADH dehydrogenase [ubiquinone] 1 beta subcomplex subunit 9, Complex I-B22, CI-B22, LYR motif-containing protein 3, NADH-ubiquinone oxidoreductase B22 subunit, NDUFB9, LYRM3, UQOR22

**Target/Specificity**

This NDUFB9 antibody is generated from a rabbit immunized with a KLH conjugated synthetic peptide between 97-131 amino acids from the Central region of human NDUFB9.

**Dilution**

WB~~1:2000

E~~Use at an assay dependent concentration.

**Format**

Purified polyclonal antibody supplied in PBS with 0.09% (W/V) sodium azide. This antibody is purified through a protein A column, followed by peptide affinity purification.

**Storage**

Maintain refrigerated at 2-8°C for up to 2 weeks. For long term storage store at -20°C in small aliquots to prevent freeze-thaw cycles.

**Precautions**

NDUFB9 Antibody (Center) is for research use only and not for use in diagnostic or therapeutic procedures.

**NDUFB9 Antibody (Center) - Protein Information****Name** NDUFB9**Synonyms** LYRM3, UQOR22

**Function** Accessory subunit of the mitochondrial membrane respiratory chain NADH dehydrogenase (Complex I), that is believed to be not involved in catalysis. Complex I functions in the transfer of electrons from NADH to the respiratory chain. The immediate electron acceptor for the enzyme is believed to be ubiquinone.

#### Cellular Location

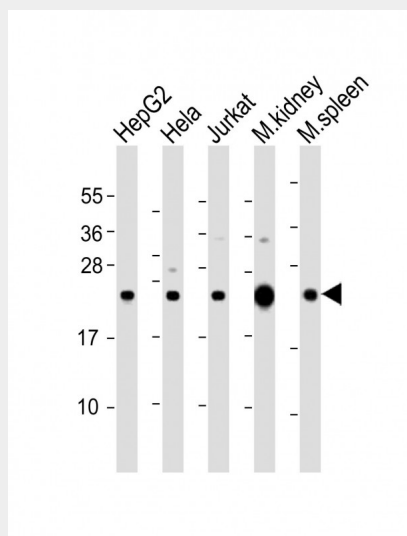
Mitochondrion inner membrane; Peripheral membrane protein; Matrix side

### NDUFB9 Antibody (Center) - Protocols

Provided below are standard protocols that you may find useful for product applications.

- [Western Blot](#)
- [Blocking Peptides](#)
- [Dot Blot](#)
- [Immunohistochemistry](#)
- [Immunofluorescence](#)
- [Immunoprecipitation](#)
- [Flow Cytometry](#)
- [Cell Culture](#)

### NDUFB9 Antibody (Center) - Images



All lanes : Anti-NDUFB9 Antibody (Center) at 1:2000 dilution Lane 1: HepG2 whole cell lysate Lane 2: HeLa whole cell lysate Lane 3: Jurkat whole cell lysate Lane 4: mouse kidney lysate Lane 5: mouse spleen lysate Lysates/proteins at 20 µg per lane. Secondary Goat Anti-Rabbit IgG, (H+L), Peroxidase conjugated at 1/10000 dilution. Predicted band size : 22 kDa Blocking/Dilution buffer: 5% NFDM/TBST.

### NDUFB9 Antibody (Center) - Background

Accessory subunit of the mitochondrial membrane respiratory chain NADH dehydrogenase (Complex I), that is believed to be not involved in catalysis. Complex I functions in the transfer of electrons from NADH to the respiratory chain. The immediate electron acceptor for the enzyme is believed to be ubiquinone.

### NDUFB9 Antibody (Center) - References

Triepels R.,et al.Submitted (JAN-1998) to the EMBL/GenBank/DDBJ databases.  
Lin X.,et al.Hum. Hered. 49:75-80(1999).  
Ye Z.,et al.Biochem. Biophys. Res. Commun. 275:223-227(2000).  
Zhang Q.-H.,et al.Genome Res. 10:1546-1560(2000).  
Ota T.,et al.Nat. Genet. 36:40-45(2004).